

The "value chain" that unites us



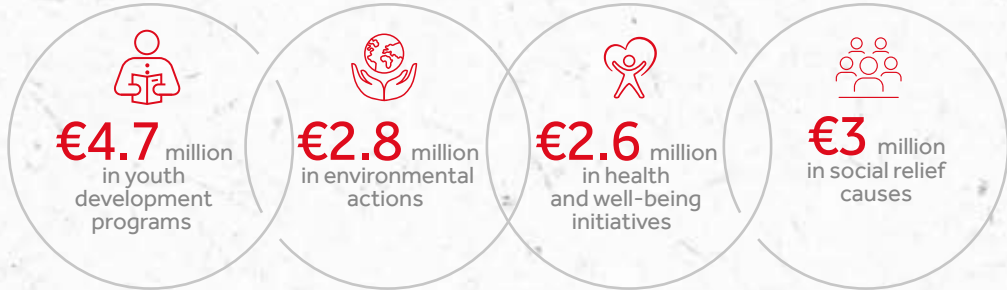
ADDED VALUE

EMPLOYMENT



WE PROVIDE SUBSTANTIAL AND LONG-TERM SUPPORT TO LOCAL COMMUNITIES

€13 MILLION INVESTMENT IN COMMUNITY & CSR PROGRAMS (2010-2014)



The above data result from the Socioeconomic Impact Study that was carried out by Steward Redqueen, the specialised consultancy firm, based on 2014 financial data by Coca-Cola Tria Epsilon, The Coca-Cola Company in Greece, as well as by TSAKIRIS and Coca-Cola HBC Services, local subsidiaries of Coca-Cola HBC AG.